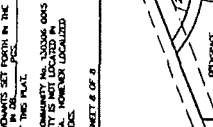


RECEIVED
JUN 11 2001

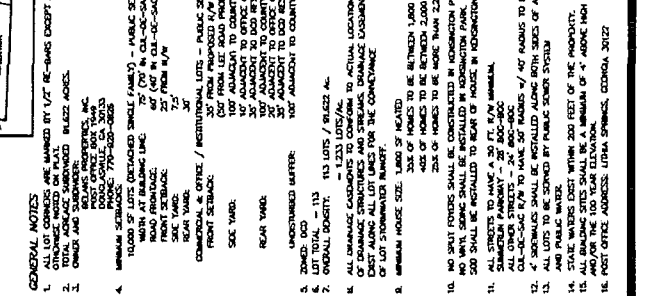
Douglas County Clerk's Office
11000 Peachtree Dunwoody Rd
Suite 200
Atlanta, Georgia 30328
Phone: 404-392-4111
Fax: 404-392-4112
E-Mail: douglasclerk@dca.ga.gov



LOCATION SKETCH
N.A.T.S.

THIS PLAT IS SUBJECT TO THE DEED AND SET FORTH IN THE DEED PLAT LOCATED AT THE COUNTY CLERK'S OFFICE IN WHICH HENRY BOONE, A PART OF THIS PLAT, AS PER OFFICIAL I.M.A. MAY FOR COMPANY INC. LOTS 2000S A, B, C, D, E, F, G, H, I, J, K, L, M, N, O, P, Q, R, S, T, U, V, W, X, Y, Z, AA, AB, AC, AD, AE, AF, AG, AH, AI, AJ, AK, AL, AM, AN, AO, AP, AQ, AR, AS, AT, AU, AV, AW, AX, AY, AZ, BA, BB, BC, BD, BE, BF, BG, BH, BI, BJ, BK, BL, BM, BN, BO, BP, BQ, BR, BS, BT, BU, BV, BW, BX, BY, BZ, CA, CB, CC, CD, CE, CF, CG, CH, CI, CJ, CK, CL, CM, CN, CO, CP, CQ, CR, CS, CT, CU, CV, CW, CX, CY, CZ, DA, DB, DC, DD, DE, DF, DG, DH, DI, DJ, DK, DL, DM, DN, DO, DP, DQ, DR, DS, DT, DU, DV, DW, DX, DY, DZ, EA, EB, EC, ED, EE, EF, EG, EH, EI, EJ, EK, EL, EM, EN, EO, EP, EQ, ER, ES, ET, EU, EV, EW, EX, EY, EZ, FA, FB, FC, FD, FE, FF, FG, FH, FI, FJ, FK, FL, FM, FN, FO, FP, FQ, FR, FS, FT, FU, FV, FW, FX, FY, FZ, GA, GB, GC, GD, GE, GF, GG, GH, GI, GJ, GK, GL, GM, GN, GO, GP, GQ, GR, GS, GT, GU, GV, GW, GX, GY, GZ, HA, HB, HC, HD, HE, HF, HG, HH, HI, HJ, HK, HL, HM, HN, HO, HP, HQ, HR, HS, HT, HU, HV, HW, HX, HY, HZ, IA, IB, IC, ID, IE, IF, IG, IH, II, IJ, IK, IL, IM, IN, IO, IP, IQ, IR, IS, IT, IU, IV, IW, IX, IY, IZ, JA, JB, JC, JD, JE, JF, JG, JH, JI, JJ, JK, JL, JM, JN, JO, JP, JQ, JR, JS, JT, JU, JV, JW, JX, JY, JZ, KA, KB, KC, KD, KE, KF, KG, KH, KI, KJ, KK, KL, KM, KN, KO, KP, KQ, KR, KS, KT, KU, KV, KW, KX, KY, KZ, LA, LB, LC, LD, LE, LF, LG, LH, LI, LJ, LK, LL, LM, LN, LO, LP, LQ, LR, LS, LT, LU, LV, LW, LX, LY, LZ, MA, MB, MC, MD, ME, MF, MG, MH, MI, MJ, MK, ML, MM, MN, MO, MP, MQ, MR, MS, MT, MU, MV, MW, MX, MY, MZ, NA, NB, NC, ND, NE, NF, NG, NH, NI, NJ, NK, NL, NM, NN, NO, NP, NQ, NR, NS, NT, NU, NV, NW, NX, NY, NZ, OA, OB, OC, OD, OE, OF, OG, OH, OI, OJ, OK, OL, OM, ON, OO, OP, OQ, OR, OS, OT, OU, OV, OW, OX, OY, OZ, PA, PB, PC, PD, PE, PF, PG, PH, PI, PJ, PK, PL, PM, PN, PO, PP, PQ, PR, PS, PT, PU, PV, PW, PX, PY, PZ, QA, QB, QC, QD, QE, QF, QG, QH, QI, QJ, QK, QL, QM, QN, QO, QP, QQ, QR, QS, QT, QU, QV, QW, QX, QY, QZ, RA, RB, RC, RD, RE, RF, RG, RH, RI, RJ, RK, RL, RM, RN, RO, RP, RQ, RR, RS, RT, RU, RV, RW, RX, RY, RZ, SA, SB, SC, SD, SE, SF, SG, SH, SI, SJ, SK, SL, SM, SN, SO, SP, SQ, SR, SS, ST, SU, SV, SW, SX, SY, SZ, TA, TB, TC, TD, TE, TF, TG, TH, TI, TJ, TK, TL, TM, TN, TO, TP, TQ, TR, TS, TT, TU, TV, TW, TX, TY, TZ, UA, UB, UC, UD, UE, UF, UG, UH, UI, UJ, UK, UL, UM, UN, UO, UP, UQ, UR, US, UT, UY, UV, UW, UX, UY, UZ, VA, VB, VC, VD, VE, VF, VG, VH, VI, VJ, VK, VL, VM, VN, VO, VP, VQ, VR, VS, VT, VU, VW, VX, VY, VZ, WA, WB, WC, WD, WE, WF, WG, WH, WI, WJ, WK, WL, WM, WN, WO, WP, WQ, WR, WS, WT, WU, WV, WW, WX, WY, WZ, XA, XB, XC, XD, XE, XF, XG, XH, XI, XJ, XK, XL, XM, XN, XO, XP, XQ, XR, XS, XT, XU, XV, XW, XX, XY, XZ, YA, YB, YC, YD, YE, YF, YG, YH, YI, YJ, YK, YL, YM, YN, YO, YP, YQ, YR, YS, YT, YU, YV, YW, YX, YY, YZ, ZA, ZB, ZC, ZD, ZE, ZF, ZG, ZH, ZI, ZJ, ZK, ZL, ZM, ZN, ZO, ZP, ZQ, ZR, ZS, ZT, ZU, ZV, ZW, ZX, ZY, ZZ

SHEET 1 OF 8



SHEET 2 OF 8

SHEET 3 OF 8

SHEET 4 OF 8

SHEET 5 OF 8

SHEET 6 OF 8

SHEET 7 OF 8

SHEET 8 OF 8

GENERAL NOTES:

1. ALL LOTS ARE MANDATED BY 1/2" RE-BARS EXCEPT AS INDICATED ON THIS PLAT.
2. OWNER AND SUBMITTER: GREGORY BROWN, INC. POST OFFICE BOX 7935, STATE COLLEGE, GA 30782-0793.
3. ZONING: RESIDENTIAL SINGLE (SINGLE) - PUBLIC CENTER.
4. MINIMUM HOUSE SIZE: 1000 SQ. FT. (NET) FROM L.S. ROAD PROPOSED R/W/ WITH AT LEAST ONE SIDE STREET. 100' MAXIMUM LOT FRONTAGE. 30' MINIMUM FRONT YARD SETBACK. 30' MINIMUM SIDE YARD SETBACK. 30' MINIMUM REAR YARD SETBACK. 30' MINIMUM FRONT SETBACK. 30' MINIMUM REAR SETBACK.
5. SIDE YARD: 10' FROM L.S. ROAD PROPOSED R/W/ MINIMUM TO COUNTY RESIDENTIAL.
6. REAR YARD: 30' MINIMUM TO L.S. ROAD PROPOSED R/W/ MINIMUM TO COUNTY RESIDENTIAL.
7. ZONING: RESIDENTIAL SINGLE (SINGLE) - PUBLIC CENTER.
8. LOT TOTAL - 113 LOTS / BLOCK 4.
9. ORIGINAL DENSITY: 20 UNITS PER ACRE.
10. ALL DRAINAGE CADDISSETTS TO CONFORM TO ACTUAL LOCATION OF DRAINAGE STRUCTURES AND STREAMS. DRAINAGE CADDISSETTS TO BE PLACED ON THE CORNER OF THE LOTS.
11. MINIMUM HOUSE SIZE: 1000 SQ. FT. (NET) FROM L.S. ROAD PROPOSED R/W/ WITH AT LEAST ONE SIDE STREET.
12. SIZE OF HOMES TO BE BUILT ON LOTS 2000S A THROUGH 2000S Z TO BE BUILT WITHIN 2,000 SQ. FT. OF HEATED FLOOR AREA.
13. NO NEW HOMES SHALL BE CONSTRUCTED IN THIS AREA.
14. ALL LOTS SHALL BE INSTALLED WITHIN 180 DAYS OF THE DATE OF THIS PLAT.
15. ALL LOTS SHALL BE INSTALLED WITHIN 180 DAYS OF THE DATE OF THIS PLAT.
16. POST OFFICE ADDRESS: LITHA SPAINCO, GEORGIA 30122.

LINE	LENGTH	BEARING	CURVE CENTER	CHORD	BEARING	CHORD
L1	101.54	S00°00'00"W	63.84	101.54	S00°00'00"W	63.84
L2	101.54	S00°00'00"W	63.84	101.54	S00°00'00"W	63.84
L3	101.54	S00°00'00"W	63.84	101.54	S00°00'00"W	63.84
L4	101.54	S00°00'00"W	63.84	101.54	S00°00'00"W	63.84
L5	101.54	S00°00'00"W	63.84	101.54	S00°00'00"W	63.84
L6	101.54	S00°00'00"W	63.84	101.54	S00°00'00"W	63.84
L7	101.54	S00°00'00"W	63.84	101.54	S00°00'00"W	63.84
L8	101.54	S00°00'00"W	63.84	101.54	S00°00'00"W	63.84
L9	101.54	S00°00'00"W	63.84	101.54	S00°00'00"W	63.84
L10	101.54	S00°00'00"W	63.84	101.54	S00°00'00"W	63.84

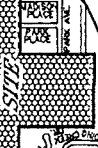
LINE	LENGTH	BEARING	CURVE CENTER	CHORD	BEARING	CHORD
C1	101.54	S00°00'00"W	63.84	101.54	S00°00'00"W	63.84
C2	101.54	S00°00'00"W	63.84	101.54	S00°00'00"W	63.84
C3	101.54	S00°00'00"W	63.84	101.54	S00°00'00"W	63.84
C4	101.54	S00°00'00"W	63.84	101.54	S00°00'00"W	63.84
C5	101.54	S00°00'00"W	63.84	101.54	S00°00'00"W	63.84
C6	101.54	S00°00'00"W	63.84	101.54	S00°00'00"W	63.84
C7	101.54	S00°00'00"W	63.84	101.54	S00°00'00"W	63.84
C8	101.54	S00°00'00"W	63.84	101.54	S00°00'00"W	63.84
C9	101.54	S00°00'00"W	63.84	101.54	S00°00'00"W	63.84
C10	101.54	S00°00'00"W	63.84	101.54	S00°00'00"W	63.84

LINE	LENGTH	BEARING	CURVE CENTER	CHORD	BEARING	CHORD
C1	101.54	S00°00'00"W	63.84	101.54	S00°00'00"W	63.84
C2	101.54	S00°00'00"W	63.84	101.54	S00°00'00"W	63.84
C3	101.54	S00°00'00"W	63.84	101.54	S00°00'00"W	63.84
C4	101.54	S00°00'00"W	63.84	101.54	S00°00'00"W	63.84
C5	101.54	S00°00'00"W	63.84	101.54	S00°00'00"W	63.84
C6	101.54	S00°00'00"W	63.84	101.54	S00°00'00"W	63.84
C7	101.54	S00°00'00"W	63.84	101.54	S00°00'00"W	63.84
C8	101.54	S00°00'00"W	63.84	101.54	S00°00'00"W	63.84
C9	101.54	S00°00'00"W	63.84	101.54	S00°00'00"W	63.84
C10	101.54	S00°00'00"W	63.84	101.54	S00°00'00"W	63.84

LINE	LENGTH	BEARING	CURVE CENTER	CHORD	BEARING	CHORD
C1	101.54	S00°00'00"W	63.84	101.54	S00°00'00"W	63.84
C2	101.54	S00°00'00"W	63.84	101.54	S00°00'00"W	63.84
C3	101.54	S00°00'00"W	63.84	101.54	S00°00'00"W	63.84
C4	101.54	S00°00'00"W	63.84	101.54	S00°00'00"W	63.84
C5	101.54	S00°00'00"W	63.84	101.54	S00°00'00"W	63.84
C6	101.54	S00°00'00"W	63.84	101.54	S00°00'00"W	63.84
C7	101.54	S00°00'00"W	63.84	101.54	S00°00'00"W	63.84
C8	101.54	S00°00'00"W	63.84	101.54	S00°00'00"W	63.84
C9	101.54	S00°00'00"W	63.84	101.54	S00°00'00"W	63.84
C10	101.54	S00°00'00"W	63.84	101.54	S00°00'00"W	63.84

**FINAL PLAT
KENSINGTON PARK
UNIT ONE
LOCATED IN
LAND LOTS 758, 759, 760, & 808
18th DISTRICT 2nd SECTION
DOUGLAS COUNTY GEORGIA
DATE: NOVEMBER 16, 2006**

A UNIT ONE PLAT, PLATS VANT-BELL



Prepared By
VANSANT - CAMPBELL
LAND SURVEYING - LAND PLANNING

1867 Bamboo Pkwy., Marietta, GA 30067
Phone: (770) 546-1545

SHEET 1 OF 8

FOR THE CITY OF DOUGLAS COUNTY, GEORGIA, THE CITY ENGINEER HAS REVIEWED THIS PLAT AND HAS DETERMINED THAT IT CONFORMS WITH THE REQUIREMENTS OF THE SUBDIVISION MAP ACT OF GEORGIA, CHAPTER 46 OF THE CODE OF GEORGIA, AS AMENDED, AND THE CITY ENGINEER HAS HEREBY APPROVED THIS PLAT FOR RECORDATION AND ISSUANCE OF DEEDS THEREON. THE CITY ENGINEER'S REVIEW IS LIMITED TO THE TECHNICAL ASPECTS OF THE PLAT AND DOES NOT CONSTITUTE AN ENDORSEMENT OF THE PROJECT OR A GUARANTEE OF THE ACCURACY OF THE INFORMATION CONTAINED HEREIN. THE CITY ENGINEER'S REVIEW DOES NOT IMPROVE THE LEGAL STATUS OF THE PROPERTY DESCRIBED IN THIS PLAT.

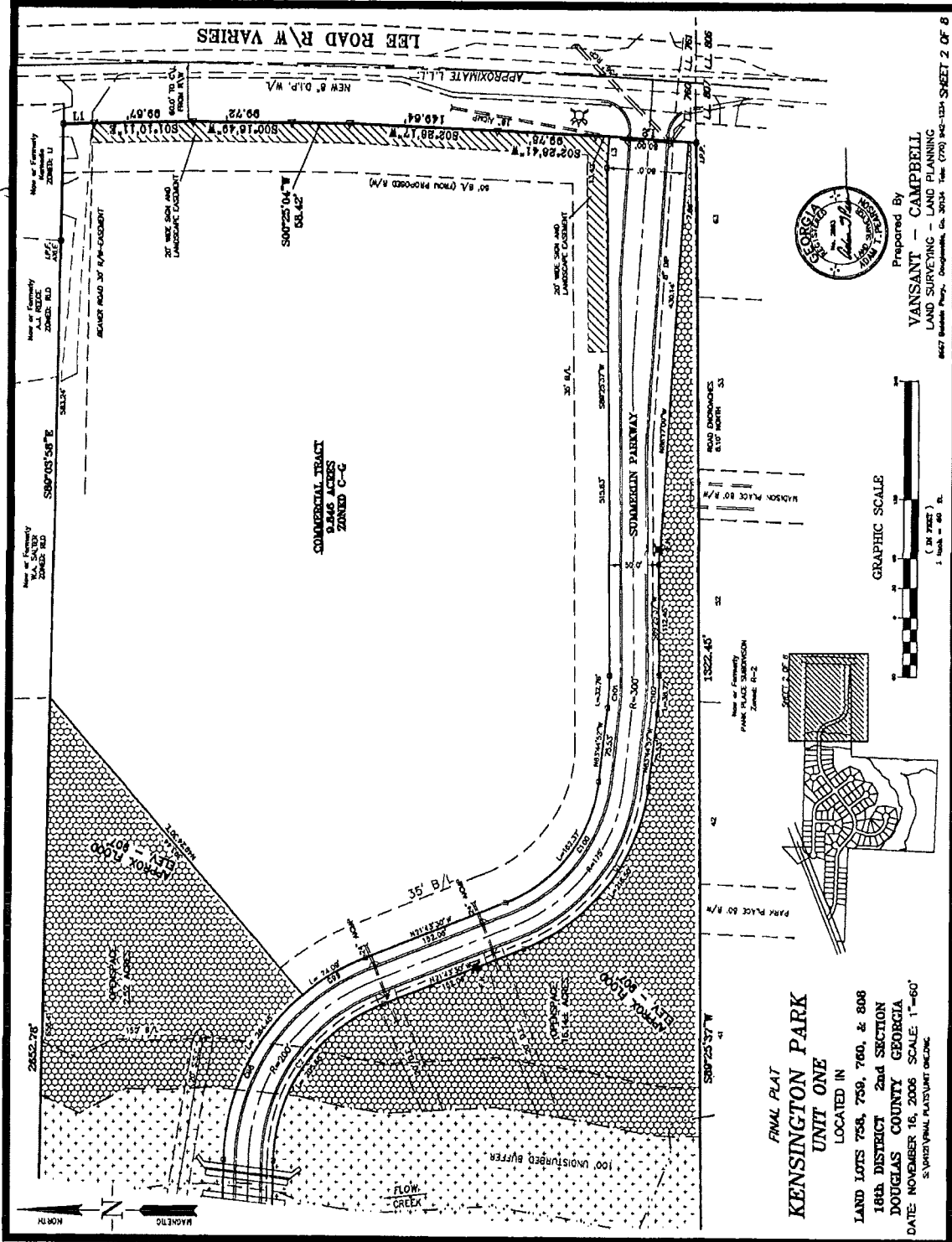
DATE: 11/16/06

FOR THE CITY OF DOUGLAS COUNTY, GEORGIA, THE CITY ENGINEER HAS REVIEWED THIS PLAT AND HAS DETERMINED THAT IT CONFORMS WITH THE REQUIREMENTS OF THE SUBDIVISION MAP ACT OF GEORGIA, CHAPTER 46 OF THE CODE OF GEORGIA, AS AMENDED, AND THE CITY ENGINEER HAS HEREBY APPROVED THIS PLAT FOR RECORDATION AND ISSUANCE OF DEEDS THEREON. THE CITY ENGINEER'S REVIEW IS LIMITED TO THE TECHNICAL ASPECTS OF THE PLAT AND DOES NOT CONSTITUTE AN ENDORSEMENT OF THE PROJECT OR A GUARANTEE OF THE ACCURACY OF THE INFORMATION CONTAINED HEREIN. THE CITY ENGINEER'S REVIEW DOES NOT IMPROVE THE LEGAL STATUS OF THE PROPERTY DESCRIBED IN THIS PLAT.

DATE: 11/16/06

Plat Bk 37 Page 5

KENSINGTON PARK ~ UNIT ONE



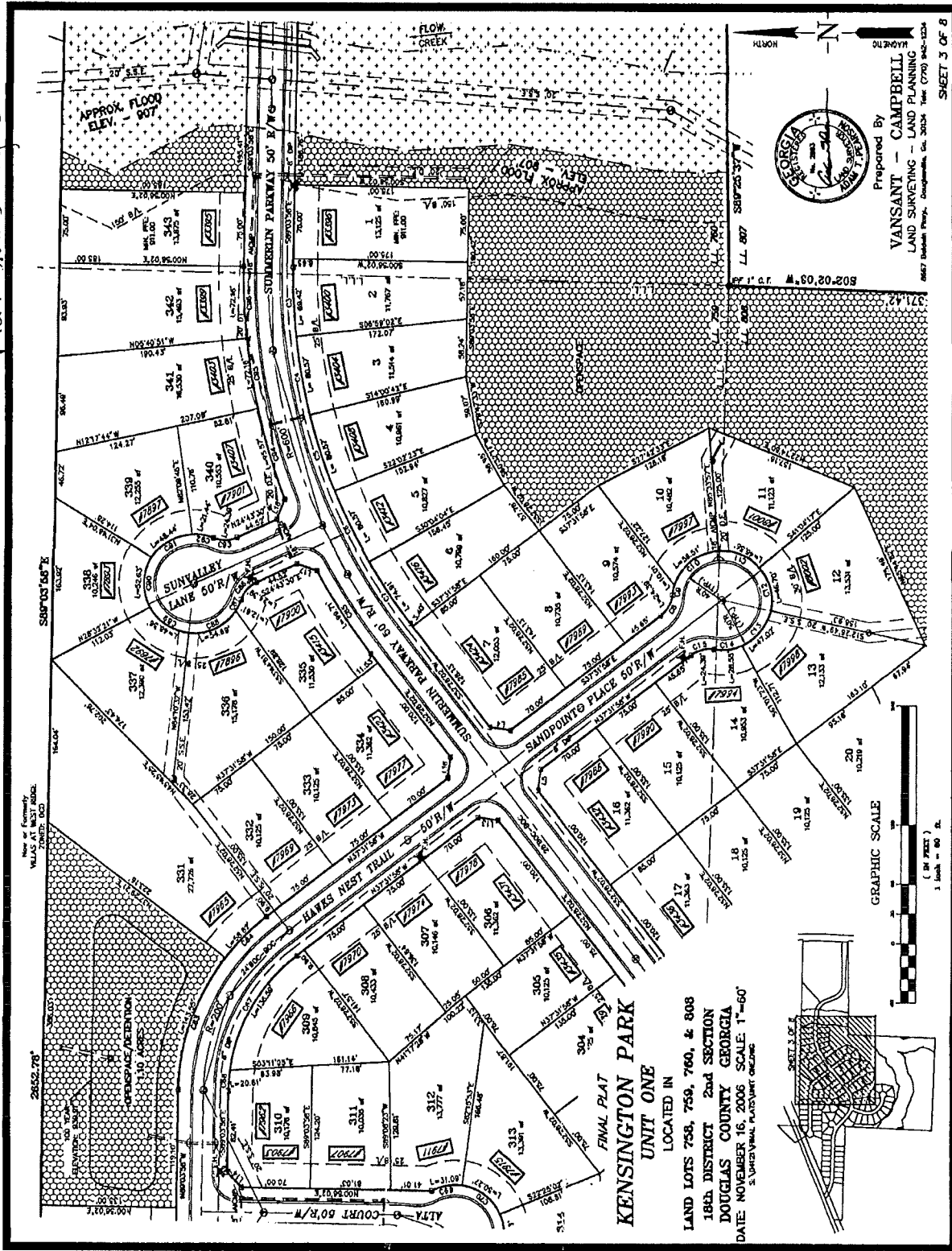
FINAL PLAT
KENSINGTON PARK
UNIT ONE
 LOCATED IN
 LAND LOTS 759, 759, 760, & 808
 18th DISTRICT 2nd SECTION
 DOUGLAS COUNTY GEORGIA
 DATE NOVEMBER 16, 2006 SCALE: 1"=60'
 3' UNDISTURBED BUFFER



Prepared By
VANSANT - CAMPBELL
 LAND SURVEYING - LAND PLANNING
 8467 Boulder Pkwy., Douglasville, Ga. 30134 Tel: (770) 942-1234 SHEET 2 OF 8

Plot BK 35 Pg 6

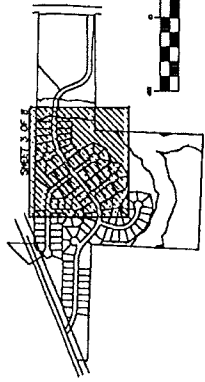
KENSINGTON PARK ~ UNIT ONE



Prepared By
VANSANT - CAMPBELL
 LAND SURVEYING - LAND PLANNING
 4667 Dabbsville Ferry, Douglasville, Ga. 30134 Year (770) 942-1234

SHEET 3 OF 8

FINAL PLAT
KENSINGTON PARK
UNIT ONE
 LOCATED IN
 LAND LOTS 758, 759, 760, & 808
 18th DISTRICT 2nd SECTION
 DOUGLAS COUNTY GEORGIA
 DATE NOVEMBER 16, 2006 SCALE 1"=60'
 S. VANCE VIAL PLATSMAN ONLINE

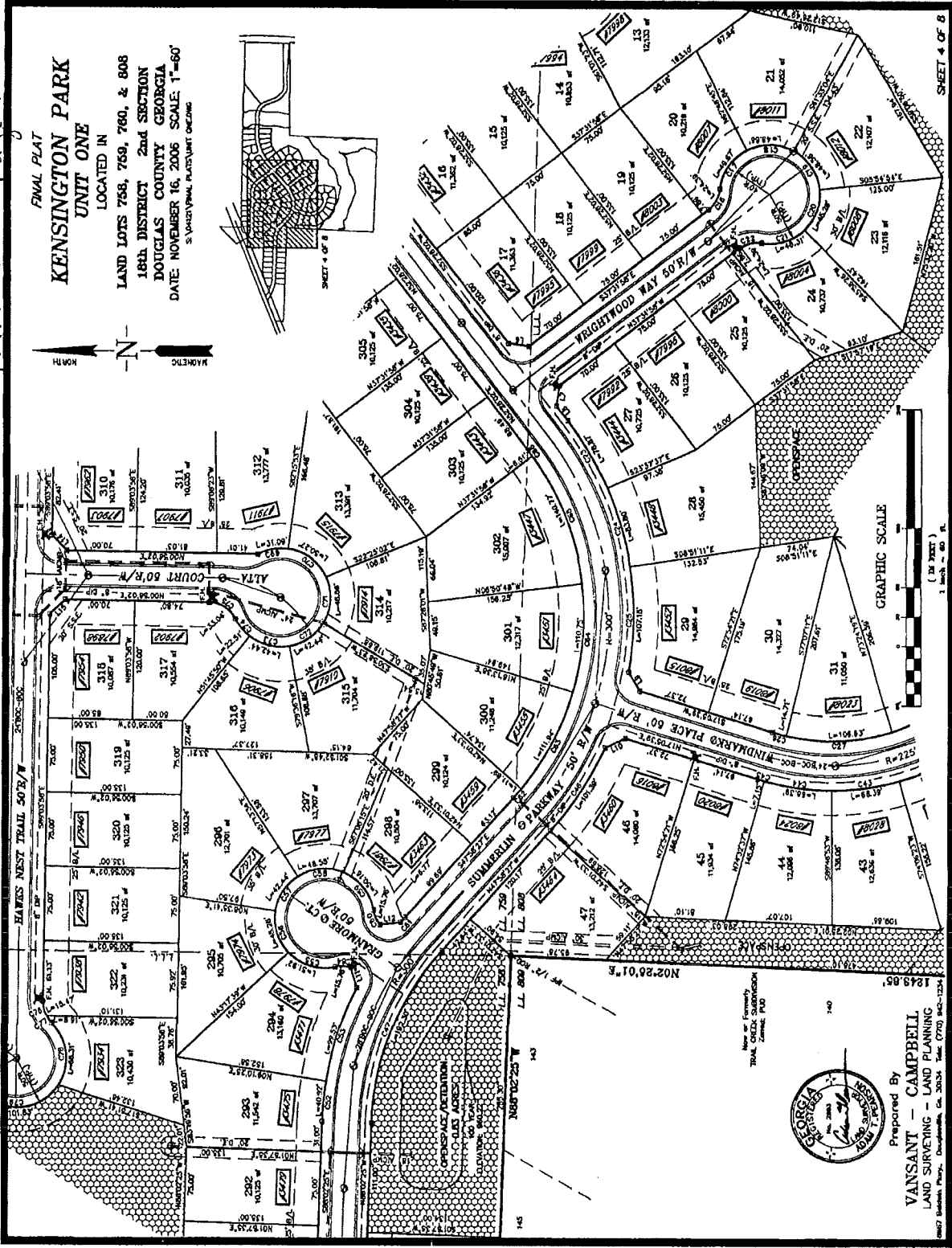
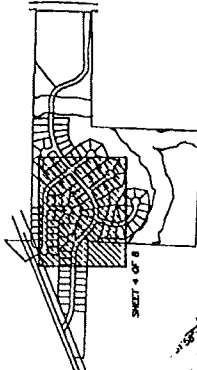
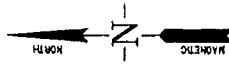


GRAPHIC SCALE
 (IN FEET)
 1 inch = 80 ft.

Plat 66-55 Page 7

KENSINGTON PARK ~ UNIT ONE

FINAL PLAT
KENSINGTON PARK
 UNIT ONE
 LOCATED IN
 LAND LOTS 758, 759, 760, & 808
 18th DISTRICT 2nd SECTION
 DOUGLAS COUNTY GEORGIA
 DATE: NOVEMBER 16, 2006 SCALE: 1"=60'
 S. 148231 FINAL PLAT UNIT ONE



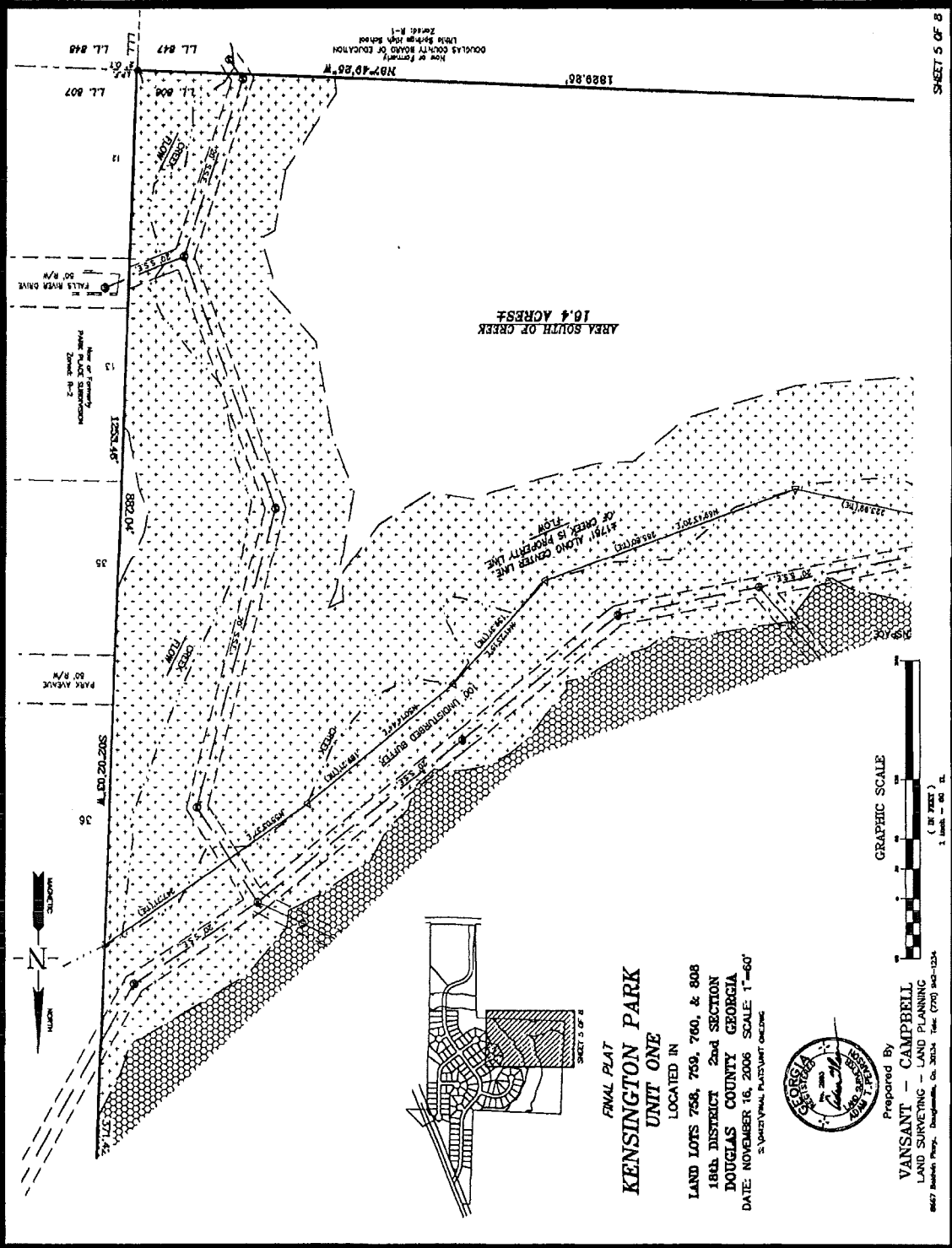
Prepared By
VANSANT - CAMPBELL
 LAND SURVEYING - LAND PLANNING
 4007 Bellamy Place, Decaturville, Ga. 30535 Phone: (770) 462-1234



SHEET 4 OF 8

Plat BK 35 Page 8

KENSINGTON PARK ~ UNIT ONE



SHEET 5 OF 8

GRAPHIC SCALE
(IN FEET)
1 inch = 60 ft.

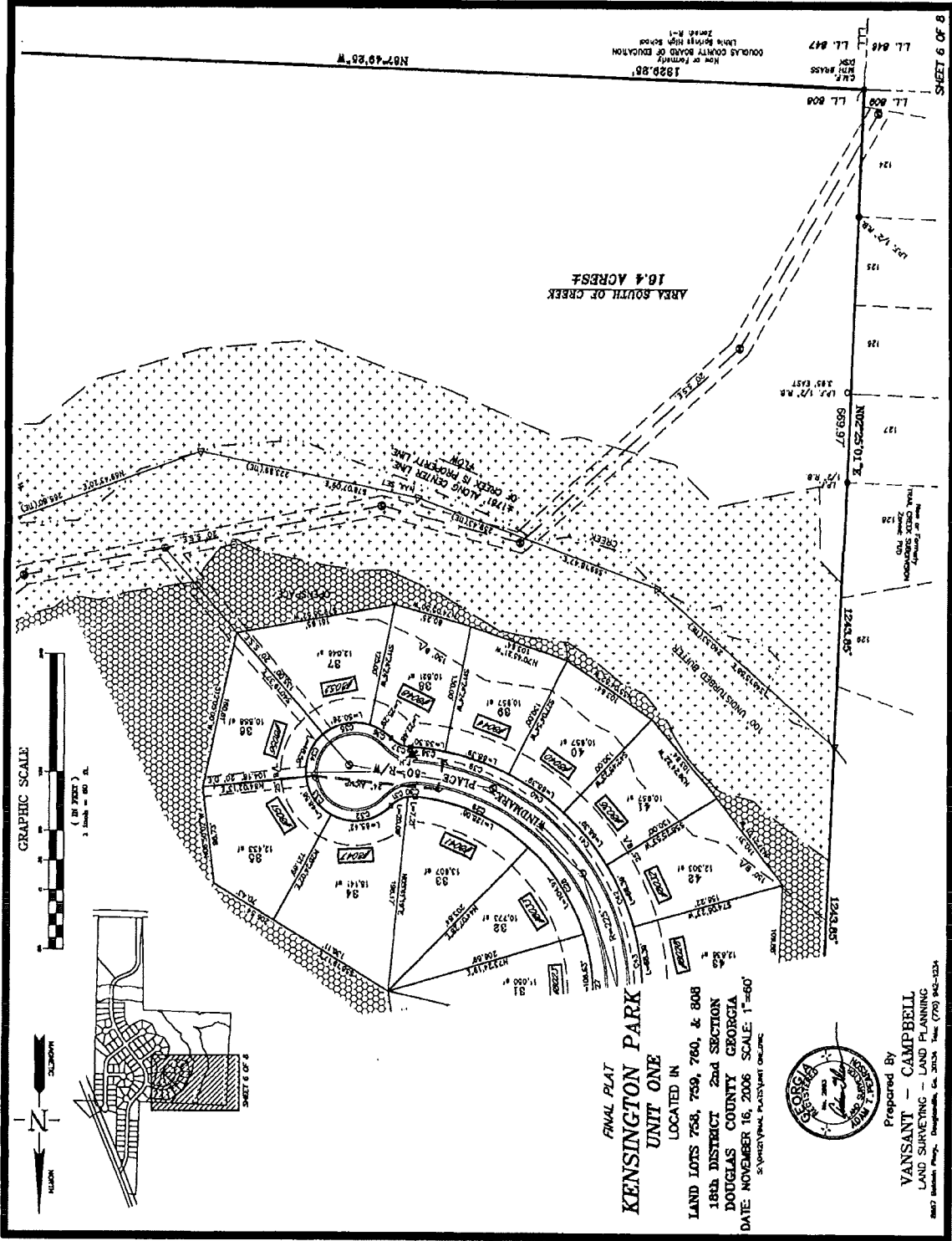
FINAL PLAT
**KENSINGTON PARK
UNIT ONE**
LOCATED IN
LAND LOTS 758, 759, 760, & 808
1884 DISTRICT 2nd SECTION
DOUGLAS COUNTY GEORGIA
DATE: NOVEMBER 16, 2006 SCALE: 1"=60'
VANSANT-CAMPBELL SURVEYING



Prepared By
VANSANT - CAMPBELL
LAND SURVEYING - LAND PLANNING
8657 Shalston Pkwy., Douglasville, Ga. 30134, Tele: (770) 942-1234

Plot No. 35 Page 4

KENSINGTON PARK ~ UNIT ONE



FINAL PLAT
KENSINGTON PARK
 UNIT ONE
 LOCATED IN
 LAND LOTS 758, 759, 760, & 808
 18th DISTRICT 2nd SECTION
 DOUGLAS COUNTY GEORGIA
 DATE: NOVEMBER 16, 2006 SCALE: 1"=50'

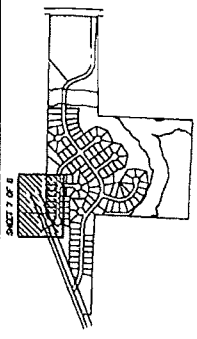
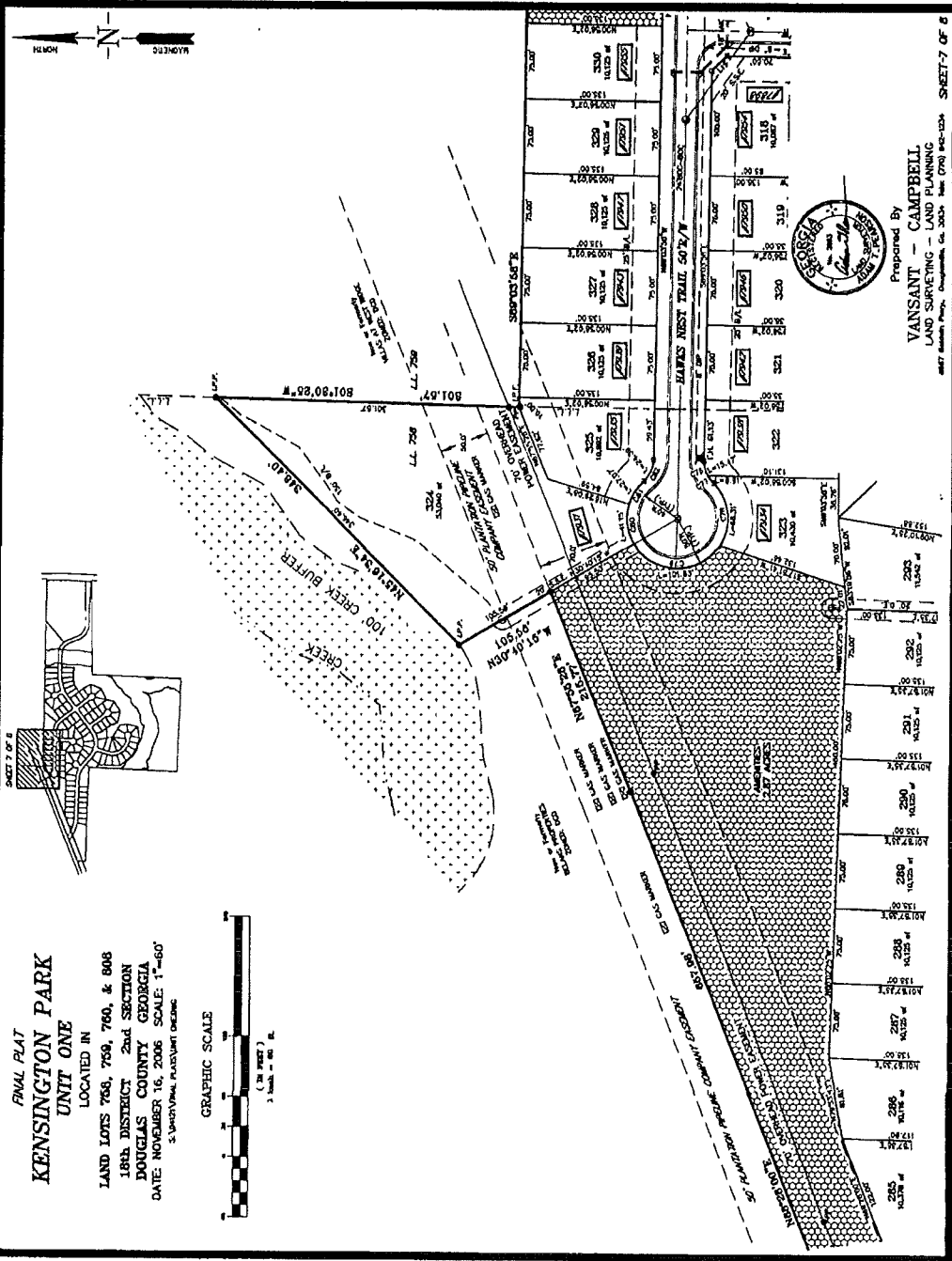


Prepared By
VANSANT - CAMPBELL
 LAND SURVEYING - LAND PLANNING
 2807 Blandford Place, Marietta, Ga. 30066 Phone: (770) 942-1234

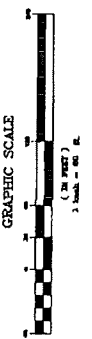
SHEET 6 OF 8

Plot No. 30 Page 10

KENSINGTON PARK ~ UNIT ONE



RIVAL PLAT
KENSINGTON PARK
UNIT ONE
 LOCATED IN
 LAND LOTS 758, 759, 760, & 808
 18th DISTRICT 2nd SECTION
 DOUGLAS COUNTY GEORGIA
 DATE NOVEMBER 16, 2006 SCALE 1"=60'
 5' UNITS/VISUAL PLACEMENT ONLY



Prepared By
VANSANT - CAMPBELL
 LAND SURVEYING - LAND PLANNING
 8827 Atlanta Park, Douglasville, Ga. 30096 Phone (770) 942-1234

SHEET-7 OF 8